

# ALUMINIUM ACCESS TOWER SYSTEM

## INSPECTION GUIDANCE

The premium industrial quality,  
aluminium access tower system

**YOUNGMAN®**

Please ensure that you follow this inspection guide carefully when using any **Youngman Aluminium Access Tower System**

The **WORK AT HEIGHT REGULATIONS** require that all equipment for work at height is inspected at intervals in accordance with the regulations. In addition to any other equipment inspections that may be carried out, **Youngman every** recommend that all **YOUNGMAN** Aluminium Access Tower components are inspected using these procedures: a) prior to use, b) when components are returned from use or hire, c) following any event that may have affected the safe use of the components. Inspection must be carried out by a competent person and records of inspections maintained in accordance with the regulations. Any components which exhibit defects as indicated below or, about which you have any doubt concerning their fitness for purpose, should be withdrawn from use and quarantined.

### PLATFORMS



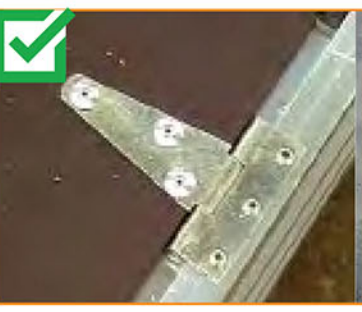
#### Plywood

- In place
- Secure
- No cracks, cuts or holes
- Laminations intact
- Non-slip coating facing upwards, undamaged and no excessive paint, plaster, oils and other contaminants



#### Platform Rivets

- Rivet heads in place
- Secure
- Undamaged



#### Trapdoor Hinges, Stay Arm and Catch

- In place
- Secure
- No excessive wear or corrosion
- Hinges and stay arm free to move
- Open trapdoor fully and release - it must close completely and latch



#### Platform Framework

- No damage, cracks, holes or excessive corrosion, especially around the welds and hooks
- No more than one dent in a 300mm length
- Check all rivets and fixings are secure
- Diagonal dimensions are equal within 5mm
- Check platform is flat within 15mm
- Wind locks operate correctly and easily
- Label showing maximum permissible platform load is in place, secure and legible



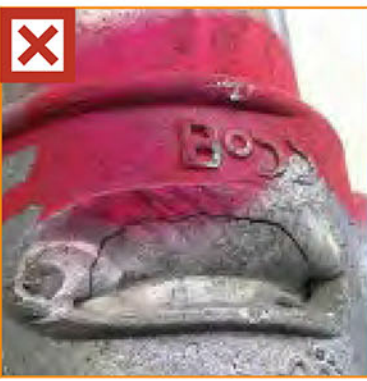
The hinges and stay arm joints of trapdoors will benefit from the application of a penetrating lubricant.

### FRAMES



#### Tubes and Corner Gussets

- Maximum deflection 5mm in 1000mm length
- No excessive denting or creasing
- No more than one dent in a 300mm length
- No cracks, cuts, holes or excessive corrosion
- Tubes sufficiently clean and free from paint, plaster and other contaminants, that would prevent safe handling or assembly



#### Joints

- No cracks or excessive corrosion in welds or surrounding metal
- No cracks or excessive corrosion in castings
- Joints at right-angle



#### Spigots

- In place and straight
- No cuts, dents or excessive corrosion
- Securely retained but floating on pin
- No damage or excessive wear to 12mm location hole
- Plastic end cap in place



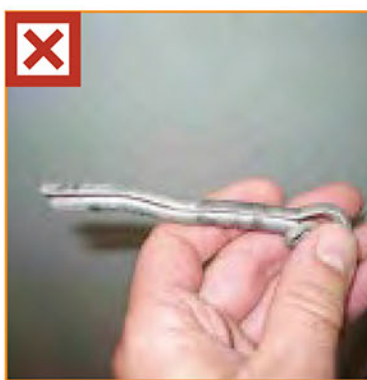
#### Built-in Ladders

- Sides and rungs straight with no cracks, cuts or excessive corrosion
- No cracks or excessive corrosion in welds or surrounding metal
- Rungs in place and secure
- No excessive paint, plaster, oils and other contaminants



#### Spring Interlock Clip

- Clips in place and operate correctly
- No distortion or excessive corrosion
- Pin secure and not worn



#### Folding Base Frames

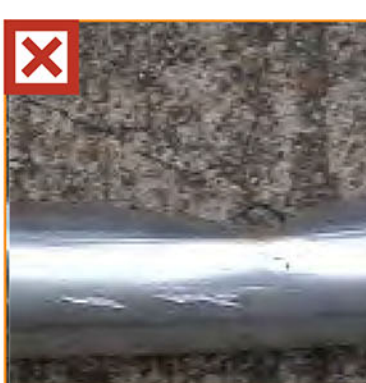
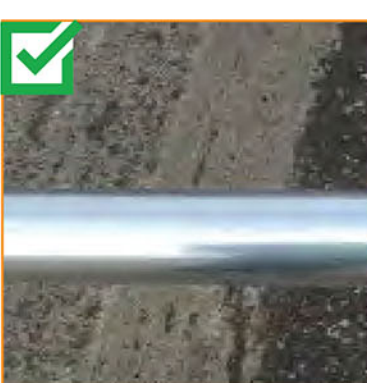
- Frames open and close
- Retaining pin in place, undamaged and engages correctly
- All fixings secure



#### Labels

- Labels securely attached and legible

### BRACES



#### Tubes

- Maximum deflection 5mm in 1000mm length
- No excessive denting or creasing
- No more than one dent in a 300mm length
- No cracks, cuts, holes or excessive corrosion
- Tubes sufficiently clean and free from paint, plaster and other contaminants, that would prevent safe handling or assembly



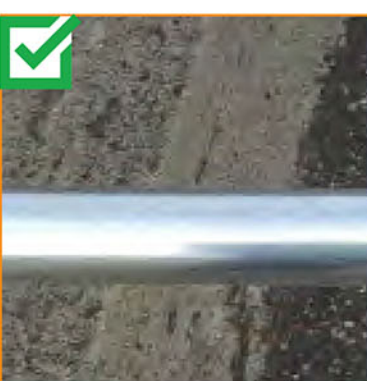
#### Hooks

- No damage, excessive corrosion or deformation, and hook works correctly
- Prime hook and latch onto a piece of frame tube. Using a moderate to heavy force, ensure hook cannot become detached



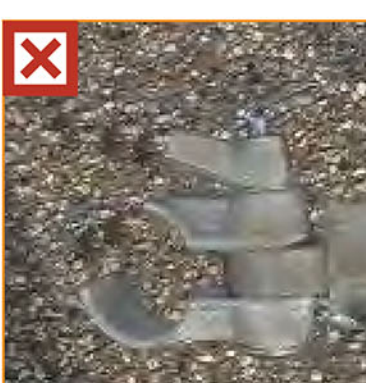
The locking mechanism of brace hooks will benefit from the application of a penetrating lubricant.

### STABILISERS



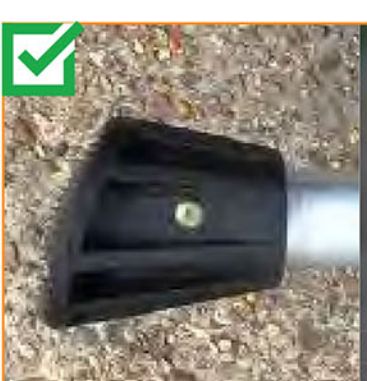
#### Tubes

- Maximum deflection 5mm in 1000mm length
- No excessive denting or creasing
- No more than one dent in a 300mm length
- No cracks, cuts, holes or excessive corrosion, or excessive paint, plaster etc.
- Telescopic tubes move freely
- Retaining clip in place, undamaged and operates



#### Clamps

- Clamps, bolt and handle in place and undamaged
- No cracks in clamp casting
- No excessive wear in bolt and handle threads
- Pivots rotate freely
- Clamp tightens securely on frame tube

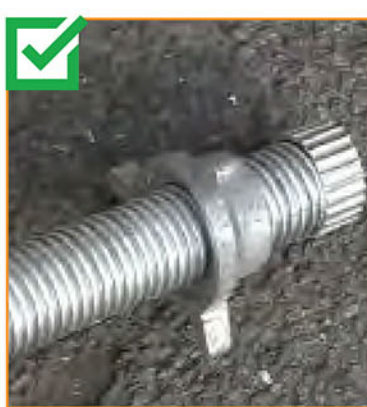


#### Foot

- Pivoting versions rotate freely
- No cracks, excessive wear or other damage
- Check security of the rivets fixing the plastic pad/foot

The threads of the bolt and handles of the locking clamp assemblies and the pivot pins in the pivot castings will benefit from the application of a penetrating lubricant.

### ADJUSTABLE LEG



#### All Parts

- Operates correctly and stem is straight, free from dents with a maximum deflection of 5mm over the entire length
- No cracks, cuts or holes or excessive corrosion
- Check retaining spring in place
- Leg fits into frame tube and is retained by the spring
- Castor fits into adjustable leg

The thread of the adjustable leg and nut will benefit from the application of a penetrating lubricant.

### CASTORS



- Check brake operates correctly
- No excessive wear or damage in the wheel, spigot and swivel bearings
- Ball retains castor in adjustable leg



#### Base Plates

- No excessive buckling or corrosion
- Plate secure on stem
- Fit base plate into adjustable leg and check it is retained in position

The thread of the adjustable leg and nut will benefit from the application of a penetrating lubricant.

### TOE BOARDS & TOE BOARD CLIPS



#### Boards

- No splits or cracks
- No excessive warping

#### Clips

- Fit clip to tower tube to check operates correctly

Youngman Manufacturing India Pvt. Ltd.

Plot No 14 Ecotech 1 Ext, Greater Noida, Uttar Pradesh 201310

Sales@youngman.co.in ☎ +91-9015964626, +91-9205586056